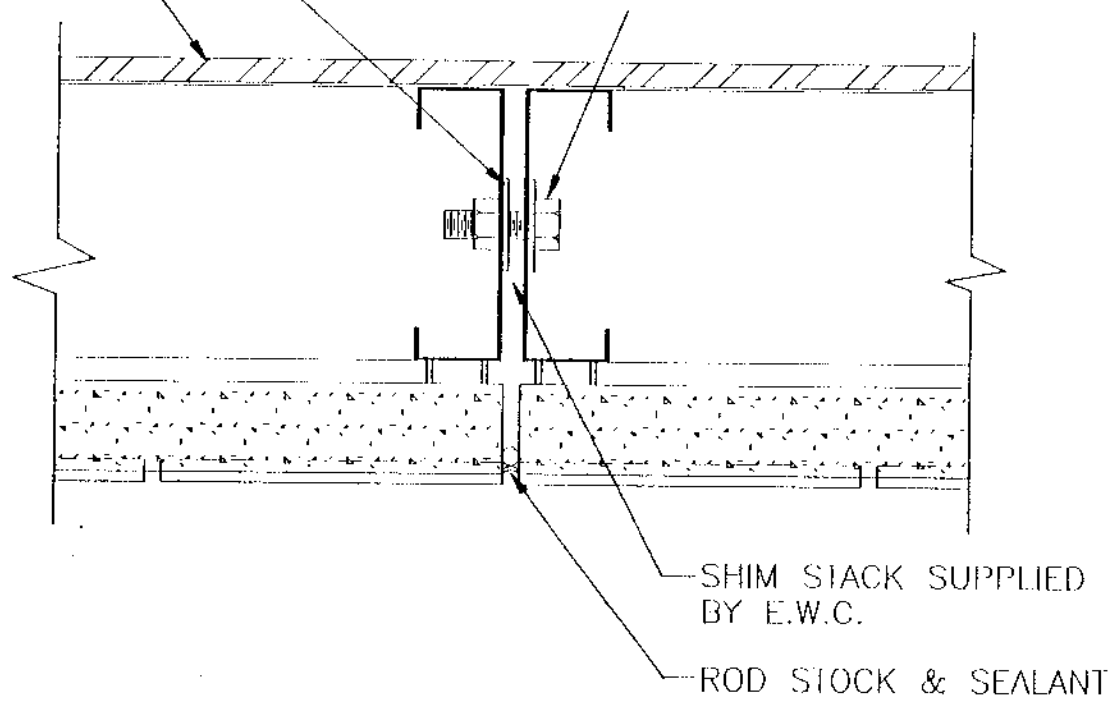


PL WASHER W/5/8" DIA. NUT
 PRE-INSTALLED ON STUD
 SECURE DRYWALL TO STUDS

5/8" DIA. BOLT W/PL WASHER
 SUPPLIED BY E.W.C.



(NOTE: CONN. CAN BE BOLTED OR WELDED)

<small>2017 PAPERNOISE LEVEL 3, SUITE 200 MINNEAPOLIS, MN 55116 (612) 781-0033</small>	FINISH:	SCALE:	JOB NO:
PROJECT: PANEL TO PANEL CONNECTION	DATE:	DRAWN: DW	DRAWN NO: INSERT 2